

New Depth Map of Lake of Bays to be Released in May

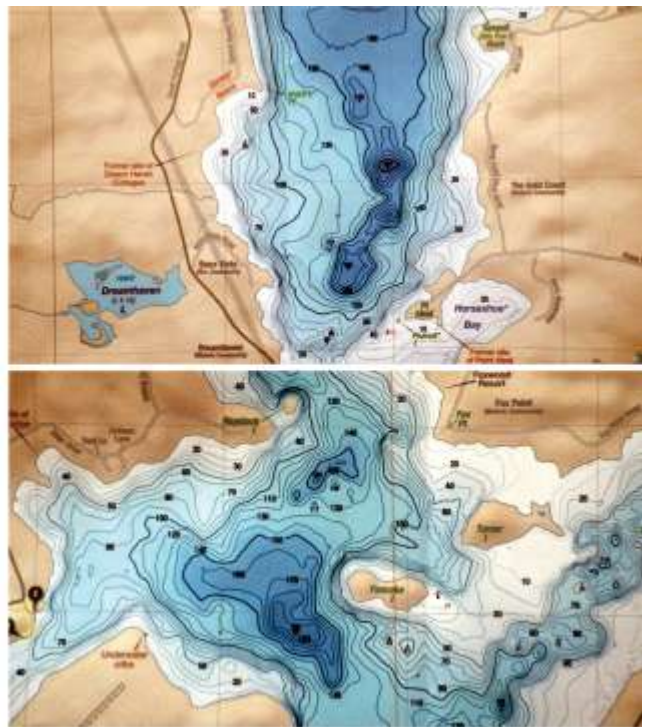
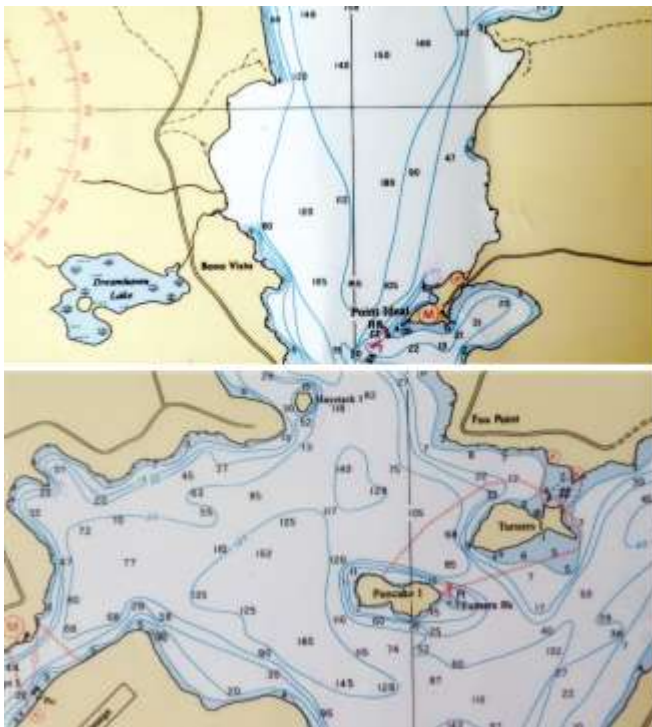
A new, updated depth map of Lake of Bays has been completed and is now available for purchase. This ambitious project is the undertaking of Greg Betteridge, a recently retired trout biologist with the Ontario Ministry of Natural Resources in Algonquin Provincial Park, in cooperation with Jeff McMurtrie of Jeff's Maps (jeffsmap.com). Greg first announced that the map was in the works at the Andrew Daniels Fish Stewardship Foundation (ADFSF) Fish Stock fundraiser in July 2015, and then shared the first draft of the map at LOBA's winter meeting in January 2016. Greg is thrilled to announce that the map has been completed and will be ready for purchase in May.

Why Now?

For 50 years, the Canadian Hydrographic Services Chart 6023, created from the data collected in 1963 to 1965 by Mr. H. W. Shaw of Dayton, Ohio, has served as the only Lake of Bays depth map. All other depth maps of the lake, configured in various styles and colour combinations, and retailing for up to \$25, have used the same old data set.

1965 – A lot of hard work went into creating an excellent chart for its day, but there are limitations to using only a few thousand data points. Note the widely spaced transects and long shoreline gaps.

2015 – One hundred hours on the water from May 26 to July 5, all 206 kilometres (128 miles) of shoreline driven, and more than 330,000 GPS data points yielded a much different looking map.



How is this new map different and what makes it better?

For the first time ever, precise and detailed 10 foot interval depth contours, plus 'spot' peak and troughs, are revealed for Lake of Bays, Paint Lake and the Oxtongue River.

- Land features are shown as shaded 10 foot elevation contours.
- All roads, laneways, radio and cell towers, marinas, public boat launches, navigation aids and hazards, local names and historical features, such as the sites of former lodges and camps, are identified.
- The map is printed on the best quality lightweight, waterproof and tear resistant synthetic paper.
- It is 36 inches (915 mm) square and packed to unroll flat, suitable for framing or use on the lake.

The Bottom Line

The price of the map is \$50 plus 13% HST (total \$56.50 Cdn) cash, cheque or credit card. You may order the map online from jeffsmap.com, by emailing Greg Betteridge at gregb081@gmail.com, or by phoning Greg at 705-635-2399. He will personally deliver the map to your Lake of Bays area residence at no cost.